



## Arkansas Chapter of the American Fisheries Society Fall 2002 Newsletter

### President's Message

(Certain excerpts taken from a daily message calendar)

First of all, I want to thank and congratulate everyone for their efforts towards the extraordinary February Southern Division AFS meeting. I received thanks and well-done's for months after the meeting all the way from VA to TX.

In any message, I guess that it's natural to want to discuss current issues, and/or dragons that we are personally trying to slay. This certainly applies to my message for this newsletter. I am attempting to slay dragons concerning "Communication and Communicating Effectively" and am hoping to gain some insight by sharing some of these issues with you all.

Actually, I don't think that these dragons are ever really slain. Communicating effectively is a constant and continuous battle, as issues vary and every person that you are trying to communicate with presents a different challenge. "You gotta dance with the one that brung you!" For us, as professional fisheries biologists, our dance partners may be elementary school-to-college students and teachers, timber or industrial company personnel, regulatory agencies, biologists or administrators from other agencies, loggers, gravel miners, a TV news reporter, and/or that landowner in the back forty with his pack of Rottweilers and sawed off shotgun.

We must know many communication dances, as well as what dance to dance with which partner. In other words, we need to be able to size up an issue, and present it to (and with) our partners and adversaries in a manner that is not only informative but palatable as well. We have to have credibility to be able to sell our side of any issue. To gain credibility, we must be informed!!! There is nothing so frustrating or informative as arguing with someone who knows what they are talking about. Whoever said, "Ignorance is bliss" did NOT know what they were talking about.

"Tolerance is based on courtesy, respect, and the suspicion that the other person may be right." Particularly in many of our dealings with the publics, from their point of view they are right!

Often they have a particular agenda that may be completely met but may not be very environmentally sensitive for the natural resources. Our job is to come up with alternatives that still meet the needs of the intended project, as well as protect the resources. Usually, this is a difficult task. The promotion of resource protection and/or conservation can quite frequently add to the project cost. It is well worth the effort to become informed about federal and state programs that can compensate, particularly landowners, for the increased costs. "You cannot sink someone else's end of the boat and still keep your own end afloat."

Have you heard the saying that "Some people are so pushy they can follow you through a revolving door and end up coming out first"? Even though we may feel that we are on the side of right, we don't ever want to strong-arm any situation. We want to convince with evidence, information, and hopefully, a confident and winning way. Bullying or shaming should always be a last resort...

"There is nothing wrong with having nothing to say---unless you insist on saying it anyway." Isn't that the truth? And then there's "many people that have the gift of gab, don't know how to wrap it." Which translates to: Just because someone is talking doesn't mean they are really saying anything worthwhile. This is a sure way to lose credibility, as well as stall any constructive communication.

I am still struggling with slaying my communication dragons. As effective resource managers, I hope that we all strive to improve our communication skills. If you have any helpful hints, please send them to me. I need all the help that I can get!

Thanks, Betty

### President's Message from Spring

(that did not make it into the last newsletter)  
WOW! What a Fantastic Southern Division AFS Meeting! The AR Chapter AFS has received many accolades and "Thank you!"s from Oklahoma to West Virginia and all the way to the National level, particularly for the 50<sup>th</sup> Anniversary Celebration activities. I am so proud to be associated with our

very special organization of AR fish squeezers. And Thank You All! for the privilege of serving our Chapter and the Arkansas fisheries professionals and resources.

Everyone worked so hard towards and at the meeting, and I want to appropriately acknowledge at least some of the major contributors. Mike Armstrong worked his magic in the financial and registration arena, and those were some complicated and detailed headaches. Brian Wagner was major assistance in absolutely every aspect and kept us all going the same and correct direction. Steve Lochmann was always available for assistance and advice, and John Jackson was always ready with that checkbook.

April Layher was essential in getting the message out along with Chris Davidson, our webpage wizard. Mark Oliver did a great job on the entertainment and refreshments; I don't think anyone had a bad time or didn't get enough to eat. Diana Andrews was on the job and everywhere to help. Jimmy Barnett and his amazing assistant Lea White did a great job on the raffles and keeping the hospitality room stocked and available. All the donations were greatly appreciated.

Jeff Quinn had to be the most miserable person at the meeting, but was able to put together the audio/visual needs in spite of that flu-bug. His assistants, Don Turman and Colton Dennis came to the rescue and were very appreciated by all the presenters for their A/V assistance and room set-ups. Karen Henson from the Benton AGFC office was so very helpful in selling tee shirts, taking Chapter dues, A/V assistance and everywhere else she was needed.

Joe Stoeckel came through, as usual, with the nominations, and student judging and awards, and Bill Shin was on top of the Science Fairs, also as usual. We should never take these efforts for granted. Lisa Hlass had the Environmental Committee affairs in order, and is stepping down as the Chair. Dr. Ron Johnson of Arkansas State University has graciously agreed to take Chair that committee, and is ready and willing to take over that important responsibility as soon as he and Lisa can get together for the transfer of the Committee history and some technical advice from Lisa. Lisa

has moved on to her next career and a new vocation, and we congratulate her and wish her the very best of luck.

There's no way I can name all who helped, but everyone should feel proud that this meeting went so very well. It was a gratifying effort by many chapter members, and the efforts were not in vain. The AR Chapter AFS is known to throw quite THE meeting, and we certainly lived up to that with this SDAFS meeting. Congratulations! Well Done! & Thanks!

As I mentioned at the Chapter Meeting, one of the most outstanding features of our February SDAFS meeting (yes, Mark, besides the fantastic entertainment, food and drink!) was the student participation. Over 60% of the presentations were by students, but only about 15% of the registration was students. What does that tell us???

Well, it tells me that our aquatic students are outstanding and their mentors are doing a great job. BUT! It also tells me that maybe the fisheries field professionals are not as involved in presenting their work, as they should be. Or, they feel that they don't need to be on the learning end of the business as much. I encourage each and every one of us to continue to feel and act like a student, to always be striving to stay up-to-date on new methods and current research efforts, and to present our own research or field experiments and experiences at professional meetings. We have recently lost one of our most dedicated students/teacher and outstanding Arkansas professionals.

#### ***IN MEMORY OF JOHN RICKETT***

Edited from Gary Heidt's Eulogy

John Rickett passed away on the Saturday of the Arkansas Academy of Science (AAS) Meeting, April 6, 2002, from a re-occurring illness. He was an extremely active member of the AAS as well as the AR Chapter AFS, and was a dedicated student and teacher to the very end of his life. John left behind a loving wife, and was the devoted father of five sons and four grandchildren. He was a lifelong member of the Church of Christ and wherever he lived he led singing, taught bible classes and preached. He received his BA from Harding College (1966), MS from Southern Illinois

University (1969), and Ph.D. from University of Kansas (1973), and was a professor at the University of Arkansas Little Rock, Biology Department from 1973 to the present. Since the inception of the UALR Graduate Program, John served as the Graduate Coordinator.

We all knew John as an extremely hard working, humble, caring and non-complaining individual. He expended great energy unselfishly experiencing his chosen profession - teaching his courses, conducting research, educating students and serving his professional societies - particularly the American Fisheries Society (especially the Arkansas Chapter) and the Arkansas Academy of Science. John regularly taught Ecology, Limnology, Ichthyology, Fisheries, and either Science of Biology or Zoology. He conducted research on a number of aquatic subjects including darters and was particularly fond of dragonflies. For many years he ran the AP&L studies on Lake Dardanelle. Most recently he was conducting studies with Perk Floyd on Lake Ferguson.

Those who knew him best considered John a true Renaissance Man--a man of many talents who acted on most of them. He was an accomplished musician, carpenter, and photographer. He was an avid motorcycle enthusiast, hiker and camper; he loved to travel to remote areas and contemplate the beauty of the world. John was a deep thinker and philosopher, as well as educator and scientist. A look into his home library reveals an eclectic collection, everything from the Bible to Zen and The Art of Motorcycle Maintenance. No wonder he could speak on so many subjects.

John leaves UALR, the AR-AFS, the AAS, and a multitude of family, friends and associates, who will miss him tremendously, a legacy of high standards, encouragement, compassion, and great enthusiasm. He will be well remembered.

**Betty G. Crump**

AR-AFS, Chapter President

### **Past President's Message**

When I was elected President of the Arkansas Chapter of AFS my job was clear, to plan the

Chapter's annual meeting. That was a fairly accurate assessment of my responsibilities as president-elect. It was less clear what my role as President should be.

It quickly became clear that environmental issues were a major concern for the Chapter President. I became a conservationist, something that I didn't consider myself prior to my tenure as President. Aside from our Chapter's efforts to put on the Southern Division Meeting last year, environmental issues were the most prominent agenda item for our Excom. We passed a Black Carp Resolution, talked about removing logs from the Saline River, dealt with the Grand Prairie Area Demonstration Project and the White River Navigation Project, and became co-plaintiffs in a lawsuit against the Corps of Engineers over the proposed dam on Bear Creek.

It was the last item that motivated this article. I wondered whether participation in legal action was a wise move. I believe that the Corps violated the legislation establishing the Buffalo as a National River when they granted Searcy County a permit for the dam. That's why I supported the suggestion to join the lawsuit. I wonder if becoming a plaintiff in a suit against the Corps gives the impression that our Chapter is a "radical conservationist" organization.

Several students and I were discussing a fishery biologist job with the Corps of Engineers. One individual in the group responded with horror that one shouldn't work, "for the enemy." Are we teaching young fisheries professionals to respond with knee-jerk reactions to the mere mention of entities like the Corps? How do we keep from losing our objectivity, but still take environmental responsibility as natural resource professionals? I searched for guidelines that others who wrestle with this issue have used. Here is a little of what I found.

Some things we shouldn't do...

The October 1995 issue of Environment Writer ([www.nsc.org/ehc/ew/issues/ew95oct](http://www.nsc.org/ehc/ew/issues/ew95oct)) talked about a meeting held in Boston that year. The article pointed out that some journalists were "accepting speaking fees and honoraria and travel expenses from parties with a direct interest in their reporting." This is clearly a situation where

objectivity is lost. Be careful what favors and donations you accept. They may color your scientific and professional objectivity.

It is never right to move beyond the boundaries of the law. Ecoterrorists justify spiking trees, destroying university experiments, and even burning sites proposed for development in the name of conservation. The ends do not justify the means if the means are illegal. Remember, some activities that seem less radical than ecoterrorism are equally illegal. If you are employed by a state or federal agency (that includes universities), it is illegal for you to use your employer's letterhead, your computer, your printer, your email account, or company time to send letters to legislators.

Some things we should do...

Scott Henke, president of the Texas Chapter of the Wildlife Society in 2000 wrote an article ([www.tctws.org/newsletters/April2001.pdf](http://www.tctws.org/newsletters/April2001.pdf)) where he espoused "personal political activism." Scott suggested that if we feel strongly about an issue or a piece of legislation we should communicate our opinions to our legislators (use your home computer). It should be clear to legislators that we offer our personal opinions as natural resource professionals, but do not necessarily represent the opinion of our employers.

Use the corporate system in a constructive way. Have you ever received a proxy request from a business with which you are associated? As a shareholder in a public company you are entitled to voice your opinion. John Osborne, a Spokane physician and his colleagues founded Green CAP (Corporate Accountability Project) to voice their opinion. Their organization has used shareholder resolutions to force publicly held companies, such as Idaho-based timber company Potlach Corp., to enact social and environmental change in the way the company conducts business.

In an article on the "greening" of society ([homepage.powerup.com.au/~kkaos/transitions.html](http://homepage.powerup.com.au/~kkaos/transitions.html)) Kim Stewart points out that activism is a blend of resistance and renewal. Resistance includes personal activities such as recycling and boycotting, and collective activities such as involvement in local politics and protest

**!!!ATTENTION FISHERIES STUDENTS!!!**

The 56th Annual SEAFWA meeting will be held October 26-30, 2002, at the Hunt Valley Marriott in Baltimore, Maryland. The SDAFS Student Affairs Committee has reserved a block of rooms for free student lodging from October 27-29. Each room will be shared by four students of the same gender. **Application deadline is October 11, 2002.** This year's SEAFWA meeting will include a revamped student social and job fair to foster direct contact between State and Federal fisheries agencies, directors and human resources personnel and the students, providing a rare chance to actually meet and talk with fisheries program directors! This is a great opportunity to make some contacts and start networking for the future!

**If you are interested in obtaining free lodging, send your name, address, contact, phone number, e-mail address, school, gender, status (graduate or undergraduate), AFS member number (located on your Fisheries mailing label), a statement about why you wish to attend the meeting and the night(s) you will need lodging to either:**

Dr. Stuart Welsh

West Virginia University Cooperative Fish and Wildlife Research Unit

322 Percival Hall

Morgantown, WV 26505-6125

P (304) 293-2941, ext. 2419 FAX (304) 293-2426

**OR**

Alan Heft Maryland DNR Appalachian Laboratory 301

Braddock Road Frostburg, MD 21532

P (301) 689-7107 FAX (301) 689-7200

[ahft@dnr.state.md.us](mailto:ahft@dnr.state.md.us)

*In the event that requests exceed the number of spaces available, the following criteria will be used to determine those receiving rooms:*

1. *Is the applicant presenting a paper or poster?*
2. *Has the applicant attended a prior SEAFWA meeting?*
3. *Is the applicant a member of AFS?*
4. *Is the applicant an undergraduate or graduate student?*
5. *What was the date of the room request?*
6. *What lodging dates are available?*

movements (don't wear your agency uniform to the protest). Renewal includes personal activities such as learning to question values and articulate alternatives to environmentally unfriendly practices, and collective activities include getting involved in local cooperatives and changing public policy to facilitate community actions.

The most important thing is retaining professional perspective and objectivity (no knee-jerk reactions to the Corps, please). The position we should take on environmental issues is not always clear. Fundamentally, we must treat ourselves, our neighbors, and the environment with equal respect. In doing so, we are likely to be a good advocate for the resources we study and manage.

**President-Elect's Report  
Call for Papers!!!!**

Hey everybody! Don't forget that the joint meeting between the Tennessee and Arkansas chapters is fast approaching. **Lets get cranking on those presentations and make a good showing.** We share a lot of interests and habitats so projects on big rivers, upland streams, cave life, endemic species, reservoirs and mussels would all apply to both states. Of course we don't need to limit ourselves to those subjects. The out-of-the-box presentations are often the most interesting. Please send abstracts to:

Tim Churchill  
TWRA-Fish Mgt Division  
P.O. Box 40747  
Nashville, Tennessee 37204  
615-781-6575  
[Tim.Churchill@state.tn.us](mailto:Tim.Churchill@state.tn.us)

He would prefer the abstract be e-mailed since he could then tinker with formatting if needed. Limit it to one page including title, authors, their organization, and address. MS Word is probably the best. Tim would like them in 12 point, Times New Roman if possible. See you in Jackson next March 4-6. Here is the information I have on the meeting.

### **2003 Arkansas/Tennessee Joint Chapter Meeting**

**The Arkansas and Tennessee Chapters of the American Fisheries Society are proud to announce that they will meet jointly in 2003. This joint meeting will foster good fellowship between chapters and provide for a very valuable sharing of pertinent fisheries related information. The meeting logistics are as follows:**

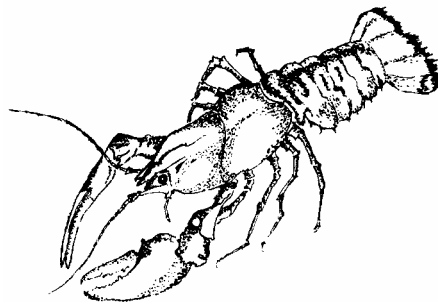
**Where: Garden Plaza Hotel  
Jackson, Tennessee**

**When: March 4-6, 2003  
Meeting starts at 1 pm on March 4<sup>th</sup> and concludes early afternoon on March 6<sup>th</sup>, depending on numbers of papers presented.**

<b>Room Rates:</b>	State rates apply	\$50	1
	person		
		\$70	2
	people		
		\$80	3-
	4 people		

**Reservations: Made directly with the Garden Plaza Hotel @ 731-664-6900 or 1-800-342-7336, make sure to tell them you are with the Tennessee Chapter-American Fisheries Society group to get these rates. Reservations MUST be made by February 1, 2003 or neither rates or room availability will be guaranteed. We have 33 king rooms, and 67 double bed rooms blocked out for March 4,5, 2003. Reservations can be made anytime after April 1,2002.**

**Meeting Registration fee: \$50.00 plus state chapter dues. Tennessee will collect all meeting fees, Arkansas chapter members should either pay their chapter dues in advance or at the Arkansas registration table at the meeting. An advanced meeting registration form will be distributed later with the call for papers.**



## Environmental Affairs Committee Report

Lisa Hlass has served as chair of the Environmental Committee for several years, with Steve Filipek, April Layher, Ken Shirley, Betty Crump, Jim Peterson, Billy Justus, Steve Lochmann and John Jackson also serving on the Committee. Lisa has moved on to a higher calling, with Ron Johnson ([rlj@astate.edu](mailto:rlj@astate.edu)) now serving as chair. Please forward him any environmental issues that are of concern to our Chapter. Things are quiet in the state at the moment with most projects stalled.

To report:

*Arkansas:* Bear Creek Dam- On April 25, the Park Service wrote the Corps, repeating that the Park Service must make a determination of the impacts of the proposed Bear Creek Dam on the Buffalo National River, and that it was undertaking studies to do so, and did not expect to be done until the year 2005. On April 26, the BLM wrote the Corps, stating that the BLM owns land that would be flooded by the reservoir behind the dam, and that BLM will not transfer any such lands to the Corps until after the Park Service makes its determination. On April 29, the Corps wrote Searcy County, stating that it "acknowledged" the positions of the two DOI agencies and that, as a condition of the existing permit, Searcy County must await the determination of the Park Service before taking any action under the permit to construct the reservoir. The project is stalled for now. Our chapter is involved in a lawsuit against the proposed project.

*Arkansas:* The USFW proposed a ban in August on the importation and interstate shipment of Black Carp under the Injurious Wildlife Provision of the Lacey Act. The black carp, used by American aquaculture farmers to control snails for the prevention of yellow grub parasitism of cultured fish. The proposed rule is in response to concerns about the possible impact of black carp on imperiled native mussels and snails in the Mississippi River basin. Public comment on the proposal to list the black carp as an injurious species under the Lacey Act will remain open for 60 days. Comments can be e-mailed to [blackcarp@fws.gov](mailto:blackcarp@fws.gov). Our Chapter has supported this ban.

*Arkansas:* The \$275 million Grand Prairie Demonstration Project was removed (for now) from the official Corps Review List as of May 23<sup>rd</sup>. This project had originally been listed as "review complete" and cleared to proceed. Yet, it ranks No. 1 on a list of "most wasteful water projects" by Taxpayers for Common Sense and National Wildlife Federation.

*Nationally:* Another project that was removed from the revised version is the \$181 million Yazoo Backwater Area Project. It aims to ease flooding in a 1,550-square-mile segment of the Mississippi Delta through use of what would be the world's largest hydraulic pumping plant. Corps officials say that project is necessary to protect homes and farms in one of the poorest areas of the country. But conservation groups say the plan would drain 200,000 acres of wetlands and increase pesticide pollution by allowing agricultural production on marginal land.

*Nationally:* A bill sponsored by the Corps of Engineers Reform Caucus, a bipartisan coalition was filed to overhaul the US Corps of Engineers. This bill, co-sponsored by John McCain and Russell Feingold, would require an external, independent review of the economics of and environmental risks for each of their large-scale engineering projects. This bill was supported in July by the National Academy of Sciences. Our chapter is on record as supporting this bill.

*Nationally:* The USDA has established a website available for interested parties for the new and expanded conservation programs on the Farm Bill (Farm Security and Rural Investment Act of 2002). <http://www.usda.gov/farmbill>

Respectfully submitted, Chairperson,  
Environmental Affairs Committee



## **From the US Fish and Wildlife Service: Black Carp: Questions and Answers**

### **1. What is the U.S. Fish and Wildlife Service proposing, with regard to the black carp?**

The U.S. Fish and Wildlife Service is proposing that the black carp be placed on the list of injurious species, which would prohibit the importation of live fish or their eggs into the United States, and would also prohibit interstate transportation of the fish. This is an action taken at the discretion of the Secretary of the Interior under authority of the Lacey Act, when such a listing is deemed necessary “to protect the interests of human beings, and wildlife and wildlife resources from the purposeful or accidental introduction and subsequent establishment of black carp populations into ecosystems of the United States.”

### **2. When will this prohibition take place?**

A proposal to place a species on the injurious species list does not guarantee that the action will, in fact, happen. Following publication of this proposal in the Federal Register, there will be a 60-day period for public comment. Following that, the Service must then evaluate the public comment and determine if the process should proceed to what is called the Final Rule phase. Should the decision be to go ahead, a Final Rule would be prepared and published in the Federal Register. The prohibitions on importation and interstate transportation would take effect 30 days after the Final Rule is published.

### **3. What danger do black carp present?**

The grass carp, a close Asian relative, expanded into all of the Lower 48 States except Montana and Vermont following its introduction into Arkansas and Alabama in 1963. If black carp were to escape or be released into the wild, they would likely survive and or become established with or without reproduction. Black carp would likely spread throughout the U.S. since there are no known limiting factors. In their native habitats, these fish feed on snails and mussels that are similar to those found in many American rivers, especially those in the Southeastern U.S. The fish would compete for food with native species of birds, fish and small vertebrates. A dramatic decline in the population of snails, which play an important role as grazers of algae, could produce sudden surges in algae mats, upsetting natural wildlife habitats. Additionally, black carp host many parasites and flukes as well as bacterial and viral diseases that could infect sport, food or threatened and endangered fish species, and the likelihood and magnitude of effect

on threatened and endangered species is high. Of 300 groups of freshwater mussels nationwide, 67 percent are vulnerable to extinction or have already gone extinct, and 69 species remained federally protected. Freshwater mollusks play a critical ecological role in maintaining the health of aquatic ecosystems; they also have the potential to negatively affect the cultured pearl industry through predation on commercial mussel species.

### **4. How would you describe the black carp?**

The black carp – also known as snail carp, Chinese black carp, black amur, Chinese roach or black Chinese roach, is a freshwater fish that inhabits lakes and lower reaches of large, fast moving rivers. The species inhabits most drainages of eastern Asia. Its natural range includes China, parts of far eastern Russia and possibly northern Vietnam. Records of black carp in Taiwan and Japan likely represent introductions. The fish typically grow to more than 3 feet in length and weigh, on average, about 33 pounds. They can reach 5 feet in length and weigh up to 150 pounds. Individuals have been known to live 15 years. Adults possess powerful crushing teeth that permit the fish to crush the shells of large mollusks. A 4-year-old black carp can consume an average of 3 to 4 pounds of mussels per day. Females spawn annually, depositing 129,000 to 1.18 million eggs a year, depending on body size. Black carp are one of four species of Asian carp; the other three – silver carp, bighead carp, and grass carp – have received media attention of late because of their presence in the Mississippi River system and the threat they pose to the Great Lakes Basin. Black carp are different from the other three in two important ways: 1) Black carp have *not* been found in the wild, and 2) they eat only mussels and snails.

### **5. If people already have these fish, will they be confiscated or destroyed?**

No. The states have the right to determine if the fish remain legal within their borders. Assuming they are legal in a given state, owners will retain the right to possess the fish and to use them in any way that is legal according to their respective state laws. As stated above, importation and interstate movement will be prohibited.

### **6. Where are these fish in the United States? How did they get here?**

Black carp are believed to be maintained in research and fish production facilities in Arkansas, Louisiana, Mississippi, Missouri, North Carolina, Oklahoma and Texas. The fish were imported from Asia and sent to a private fish farm in Arkansas in the early 1970s, arriving as a “contaminant” in imported

grass carp stocks. The second importation of black carp into the United States occurred in the early 1980s, when some fish farmers found them useful as a control agent for the yellow grub, which can affect catfish, and as a food fish. The fish were also imported by a Mississippi fish farmer in the early 1980s and by a fish farm operation in Missouri between 1986 and 1988. Only a small number of the commercial catfish and striped bass farms presently use the carp as a biological control agent, and substitute control mechanisms for yellow grub are available. No clams, snails or mussels were added to the endangered and threatened species list until 1976, and there were likely fewer catfish farmers then than today. When black carp were initially approved for entry into the United States more than 25 years ago, no threat was perceived. Today, 102 clams, mussels and snails are listed as endangered or threatened, making black carp a legitimate threat.

#### **7. Where are black carp being used?**

We believe black carp are being used in Arkansas, Mississippi, Texas, Missouri, Louisiana and possibly North Carolina. The U.S. Fish and Wildlife Service expects to receive more data on the use and value of black carp during the public comment period, which remains open until September 30, 2002. It is to the enormous credit of fish farm operators that no black carp have been released into the wild. However, even the most responsible operator may be hard pressed to prevent escape in the wake of a catastrophic natural disaster, and that's one of the major reasons for this listing proposal.

#### **8. Will this prohibition affect fish farms where the black carp are being used?**

As long as the fish farms are not importing black carp or moving them across state lines, there should be no adverse effects on their operation. However, given the potential negative impacts of the species, we hope all users of black carp will find an acceptable alternative to controlling the snails.

#### **9. So why not eradicate these fish?**

At the moment, none have been found in open waters, and none are known to be established in the wild. Decisions about eradication usually rest with the State fish and game agencies, not with the U.S. Fish and Wildlife Service.

#### **10. If none are in the wild, why should we be concerned?**

The likelihood of escape or release of black carp is high. Aquaculture farms that use the black carp are located in the Southeastern U.S., and much of the Mississippi River delta is at moderate to high risk of natural disasters, including tornados, flooding and hurricanes. A natural disaster in the Southeast could result in a release of black carp from aquaculture farms (the first and only known introduction of black carp into a natural waterway occurred during a flood; in that instance, the fish were believed sterile and did not establish a population). Should the black carp become a popular food fish, they would be farmed on a large scale and risks of escape would increase correspondingly.

#### **11. Why is the U.S. Fish and Wildlife Service proposing to list sterile black carp as well as reproductively viable black carp? Wouldn't sterile black carp present less of a threat?**

The risks of accidental release of black carp are high due to the locations of the facilities using them. Once escaped into open waters, eradication is virtually impossible. Even sterile populations are likely to have significant impact on natural systems. Black carp will feed on mollusks regardless of their reproductive ability; they are capable of eating 3 to 4 pounds of mollusks a day and can live up to 15 years. Additionally, the methods used to produce sterile fish do not guarantee 100 percent sterility, meaning that a small percentage of fertile fish may be found among groups of sterile fish.

-fws-

#### **AFS T Shirts Still Available!!!**

We still have some AR AFS Southern Division T shirts left – sizes L to XXXL!!! **Only \$12.00!!**

#### **Warmwater Streams Video Available**

“**A Resource Worth Protecting**” the latest video put out by the Southern Division AFS Warmwater Streams Committee is now available. We have a limited number and will provide them, free of charge to Universities, Agencies or other worthy institutions!

For more information about either the T shirts or videos, contact April Layher,  
870-534-0011 aolayher@agfc.state.ar.us

**Arkansas Chapter American Fisheries  
Society Officers**

**President: Betty Crump**  
**President Elect: Ken Shirley**  
**Treasurer: John Jackson**  
**Secretary: Susan Rogers**



April Layher, Newsletter Editor  
P.O. Box 8074  
Pine Bluff, AR 71611